

The William and Mary Swing Hospitality Pavilion

Restrooms

Kitchen

Stage
16' deep
20" between arch

Piano

Patio

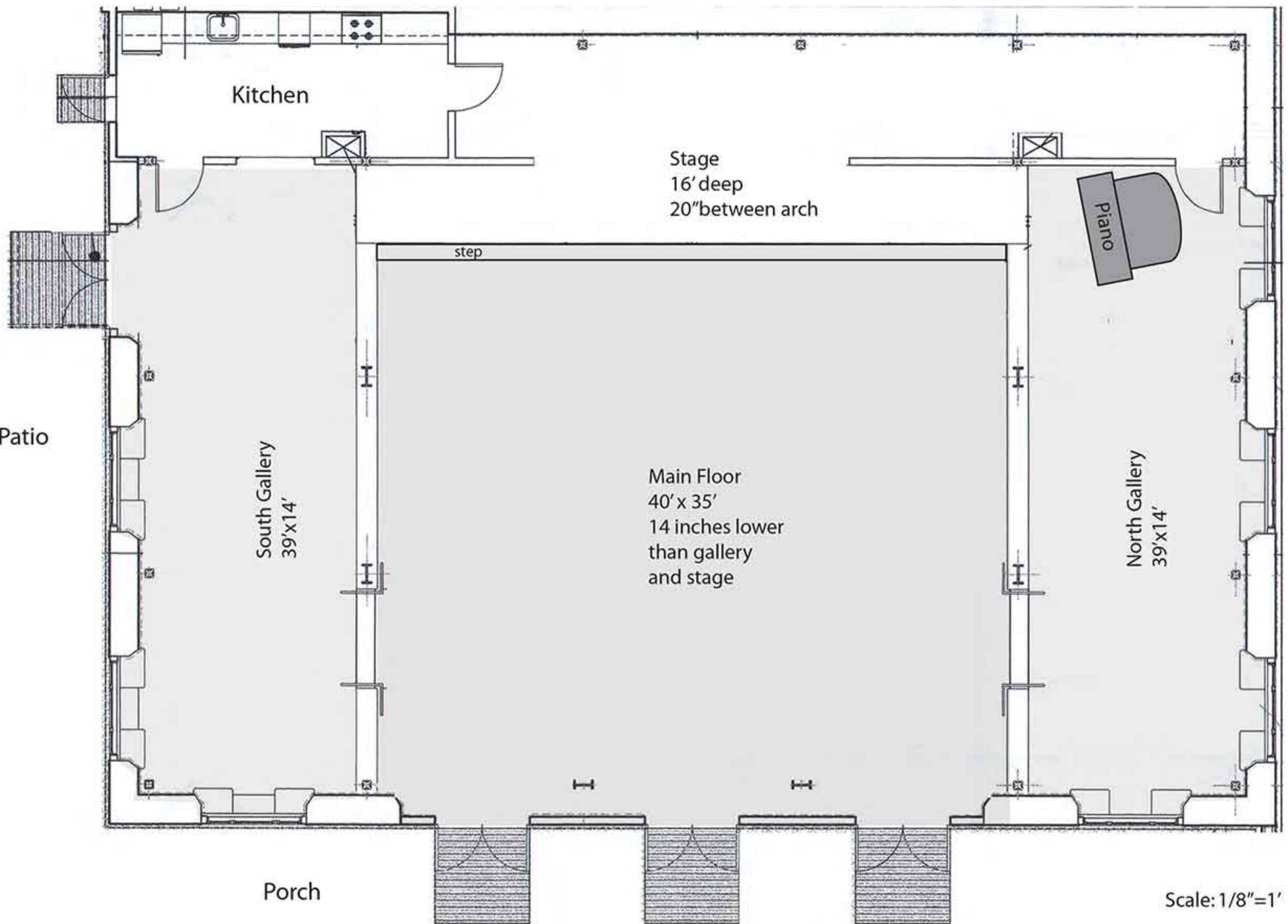
South Gallery
39'x14'

Main Floor
40' x 35'
14 inches lower
than gallery
and stage

North Gallery
39'x14'

Porch

Scale: 1/8"=1'



The William and Mary Swing Hospitality Pavilion

Theater style layout with 94 chairs on main floor and 56 in the galleries for a total of 150.

Restrooms

Kitchen

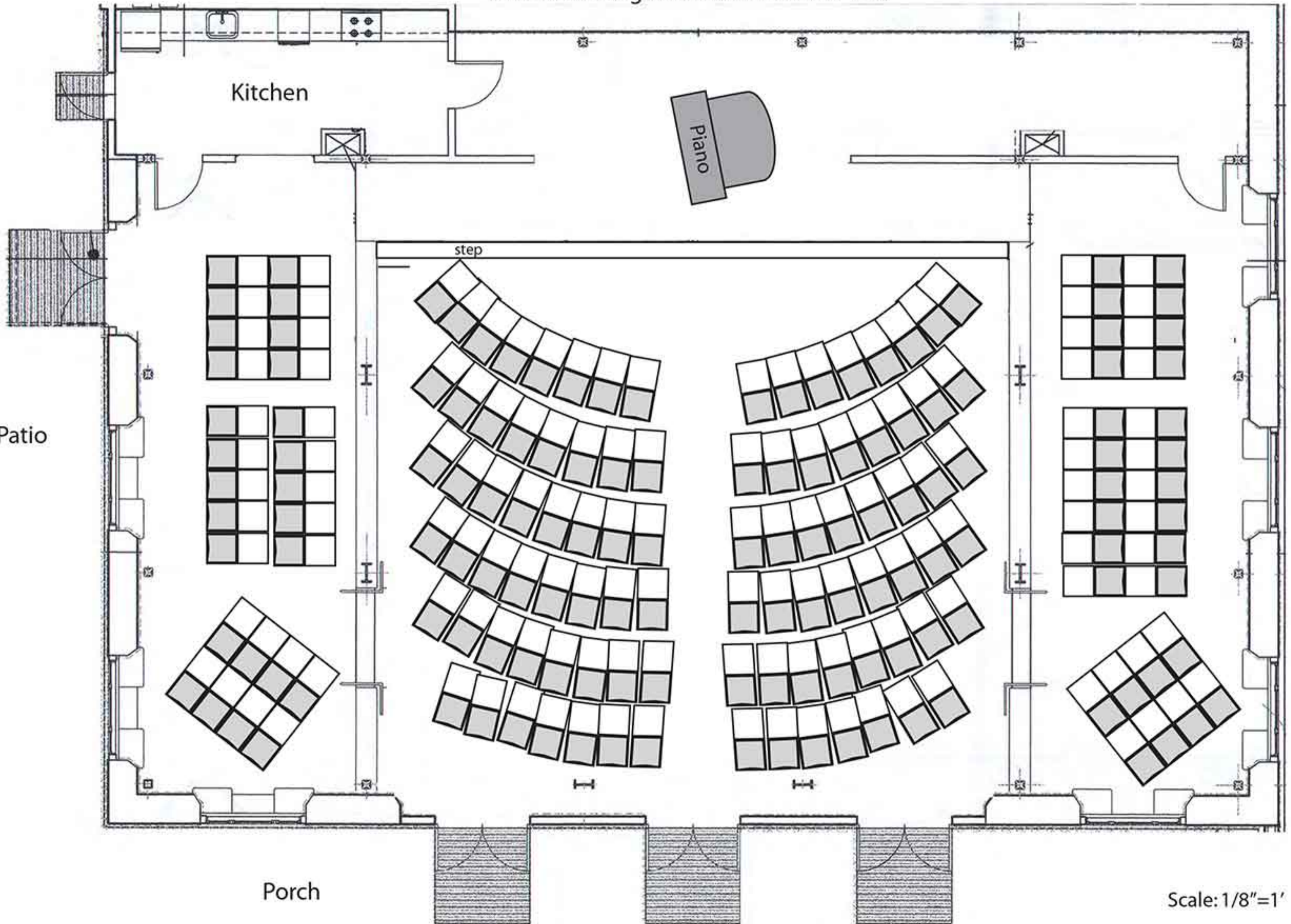
Piano

step

Patio

Porch

Scale: 1/8"=1'



The William and Mary Swing Hospitality Pavilion

Theater style layout with 90 chairs on main floor and 32 in the galleries for a total of 122.

Restrooms

Kitchen

step

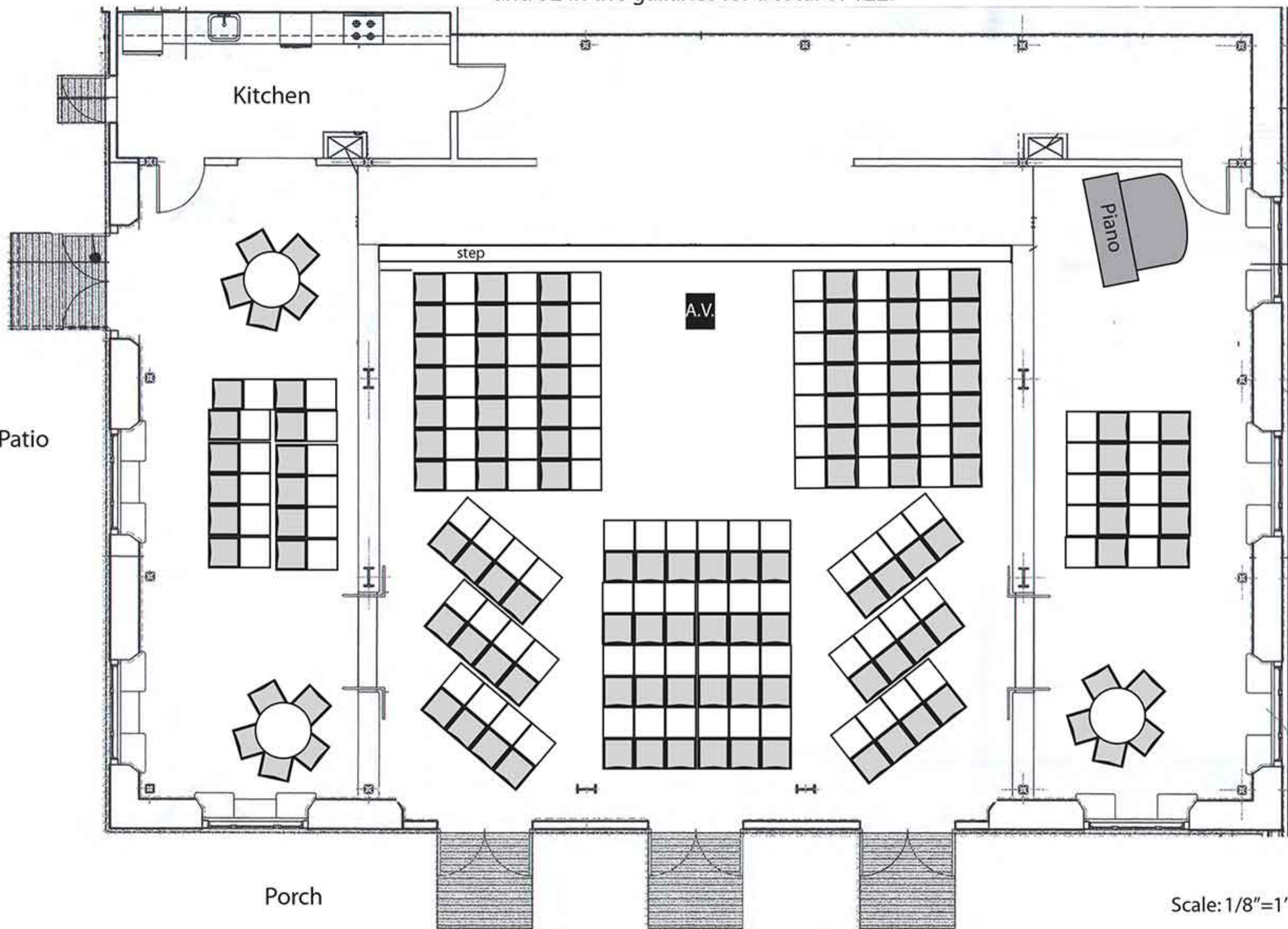
A.V.

Piano

Patio

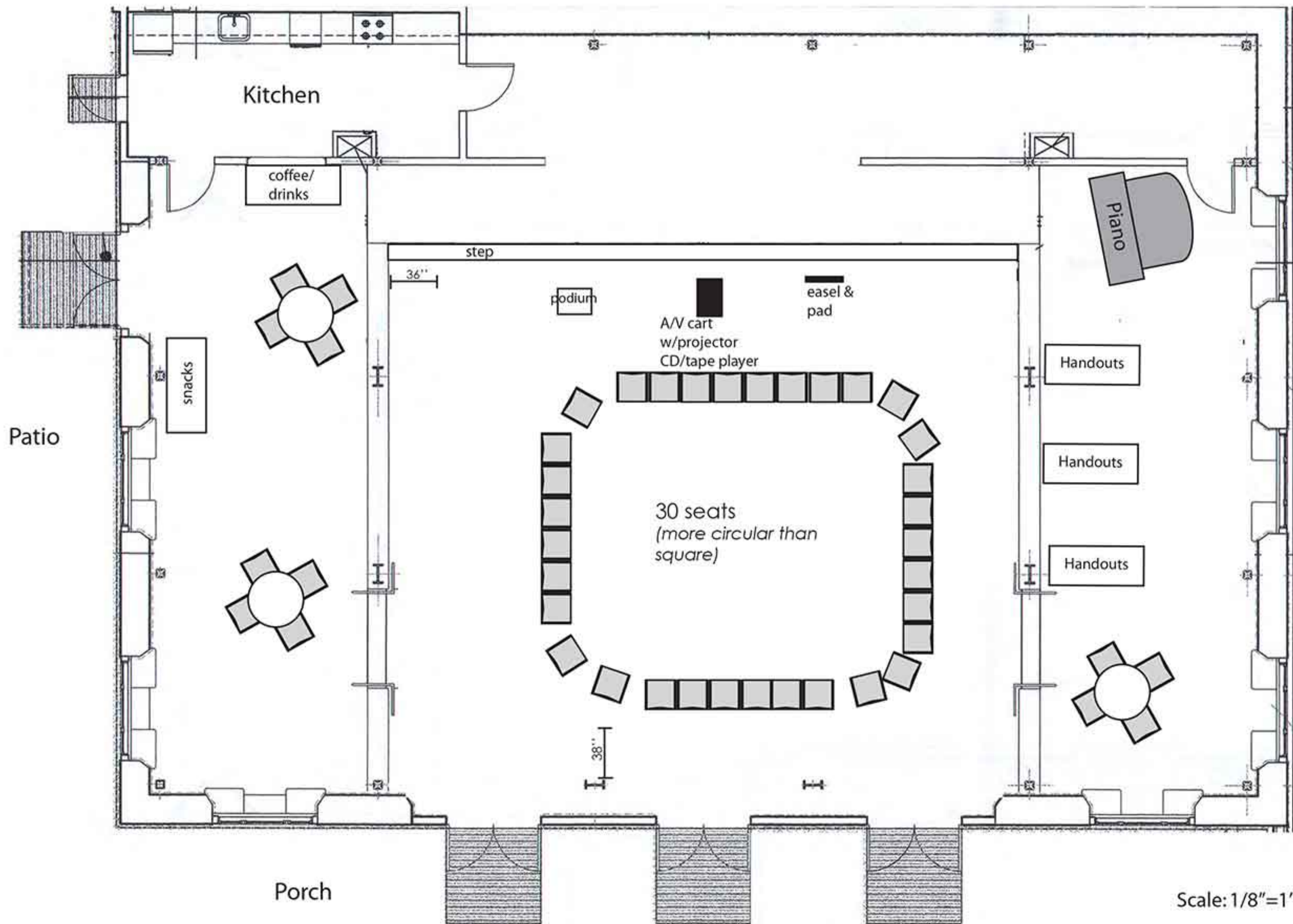
Porch

Scale: 1/8"=1'



The William and Mary Swing Hospitality Pavilion

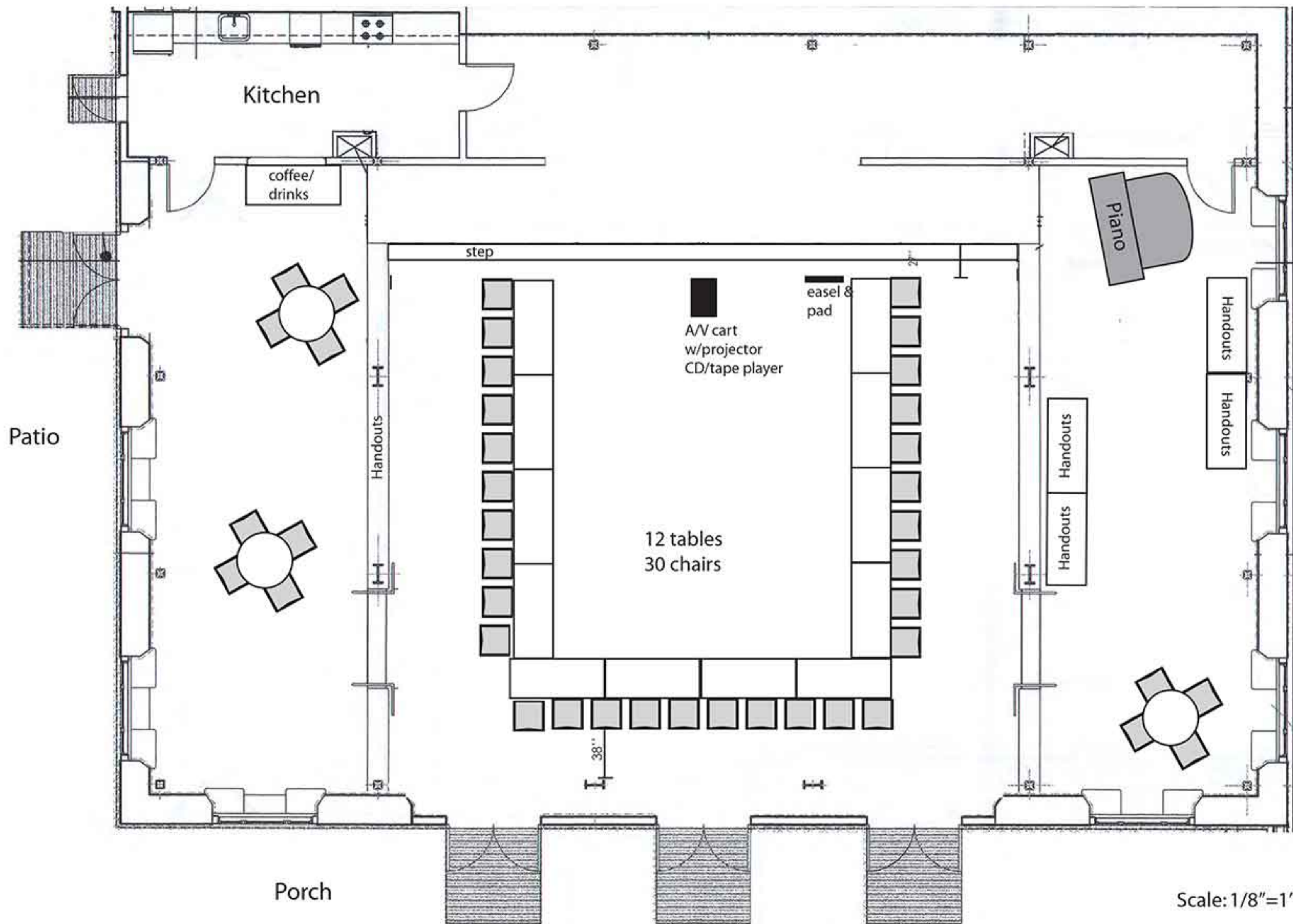
Restrooms



Scale: 1/8"=1'

The William and Mary Swing Hospitality Pavilion

Restrooms



Patio

Porch

Scale: 1/8"=1'